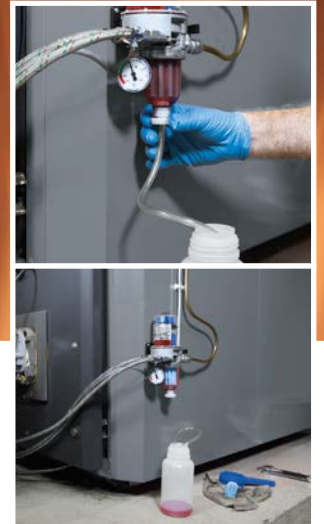


# Fuel oil de-aerator FloCo-Top-2

Multiple filtration for clean,  
de-aerated fuel oil.



## Your benefits

- + Multiple filtration for maximum separation of dirt particles
- + Compact dual float safety system keeps oil foam from escaping
- + Backflow preventer with integrated pressure relief towards the tank
- + Vacuum gauge indicates when it is time to replace the filter
- + Drain valve for fast and clean filter change
- + Bypass valve for easy and clean burner hose replacement
- + Easy installation with click system and AFRISO universal screw connection or standard screw connection
- + „PROOFED BARRIER“ if installed with vent hose

## Application

For single-line systems with return line in oil-fired systems for continuous de-aeration. Suitable for fuel oil EL (DIN 51603-1), diesel fuel (EN 590), liquid fuels as per DIN SPEC 51603-6 and DIN/TS 51603-8 (draft) as well as biofuel and biodiesel with a maximum of 30 % FAME (EN 14214). This product is therefore ideal for all ecologically upgraded fuel oil consuming systems that use the new paraffin-

ic fuels HVO or GTL as an admixture or 100 %. Also suitable for use in flood hazard areas and flood risk areas.

FloCo-TOP-2 can be installed in any system. Multiple filtration is recommended for burners with an oil consumption of < 20 l/h while larger systems should be operated with single filtration.



AFRISO

## Description

Automatic fuel oil de-aerator, safety version, with integrated filter, stop cock and vacuum gauge. Housing with changeover valve for multiple filtration as well as backflow preventer with integrated pressure relief towards the tank. Compact de-aerator hood made of transparent plastic with dual float safety system to keep oil foam from escaping via the de-aerator opening. The vent hose is connected at the side.

FloCo-TOP-2 lets you choose how to supply the oil to the flow line: For venting, the oil is guided via the float chamber and can then be added directly to the flow or it can be filtered again by switching the valve. In the case of multiple filtration, the return oil increases the flow rate so that the filter bowl is permanently filled with de-aerated oil.

In service mode, the vacuum gauge indicates the pump vacuum. The shut-off valve can be closed to check the suction capacity of the burner pump. Increased vacuum provides information on the degree of pollution of the filter. The pressure gauge can be rotated to any position so it is always easy to read, regardless of mounting position. The drain valve ensures that replacing the filter is easy and clean: Connect the hose, open the drain valve, loosen the union nut of the filter cup and drain the oil in a controlled way. When the burner hose needs to be replaced, it is sufficient to open a bypass valve so that the oil is drained from the float chamber via the filter cup and the drain unit.

FloCo-Top-2 is watertight up to 10 m water column.

## Technical specifications

<b>Connection Burner</b>	G <sup>3/8</sup> male with 60° cone for burner hoses
<b>Tank</b>	G <sup>3/8</sup> female
<b>Nozzle capacity</b>	Max. 100 l/h
<b>Return flow</b>	Max. 120 l/h
<b>Separating capacity air/gas</b>	> 4 l/h
<b>Mounting position</b>	Float housing vertical to the top
<b>Operating temperature range</b>	Medium/ambient: Max. 60 °C
<b>Operating overpressure</b>	Max. 0.7 bar (corresponds to static oil column of approx. 8 m)
<b>Test pressure</b>	6 bar
<b>Vacuum gauge</b>	Range: -0.7/+0.9 bar

The oil is de-aerated via the vent hose, the system remains odour-tight. Connection via supply air of the room air-independent ventilation of via the return supply of the tank withdrawal system Euroflex.

Installation with click system.

Dual float safety system keeps oil foam from escaping.

Bypass valve for draining the oil, e.g. for burner hose replacement.

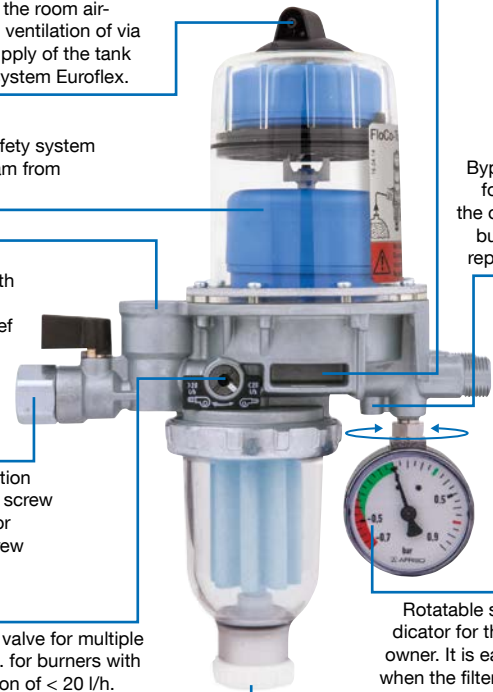
Backflow preventer with integrated pressure relief towards the tank.

Pipe connection via universal screw connection or standard screw connection.

Changeover valve for multiple filtration, e.g. for burners with a consumption of < 20 l/h.

Drain valve for fast and clean filter change.

Rotatable service indicator for the system owner. It is easy to see when the filter needs to be changed. If the filter insert is polluted, the vacuum increases and the heating expert can be notified.



i

Opticlean MC-18



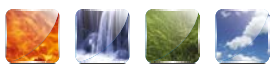
### Innovative multiple filtration

With an Opticlean filter insert, 50 % of the particles in the circulated oil are removed with a filter rating of 5 µm (99 % separation of particles > 20 µm) per filtration. This means that several filtration processes result in a genuine 5 µm filtration! The quality of the fuel oil continuously improves.

Your dealer

ID no. 991517 06705 03/22

Version	Filter surface	Part no.
<b>FloCo-Top-2KM Si</b> , sintered plastic sieve short, 50 µm	115 cm <sup>2</sup>	<b>70110</b>
<b>FloCo-Top-2KM Optimum MC-18</b> , Opticlean long, 5–20 µm	1,850 cm <sup>2</sup>	<b>70114</b>



Technology for Environmental Protection

Measuring. Controlling. Monitoring.



**AFRISO**